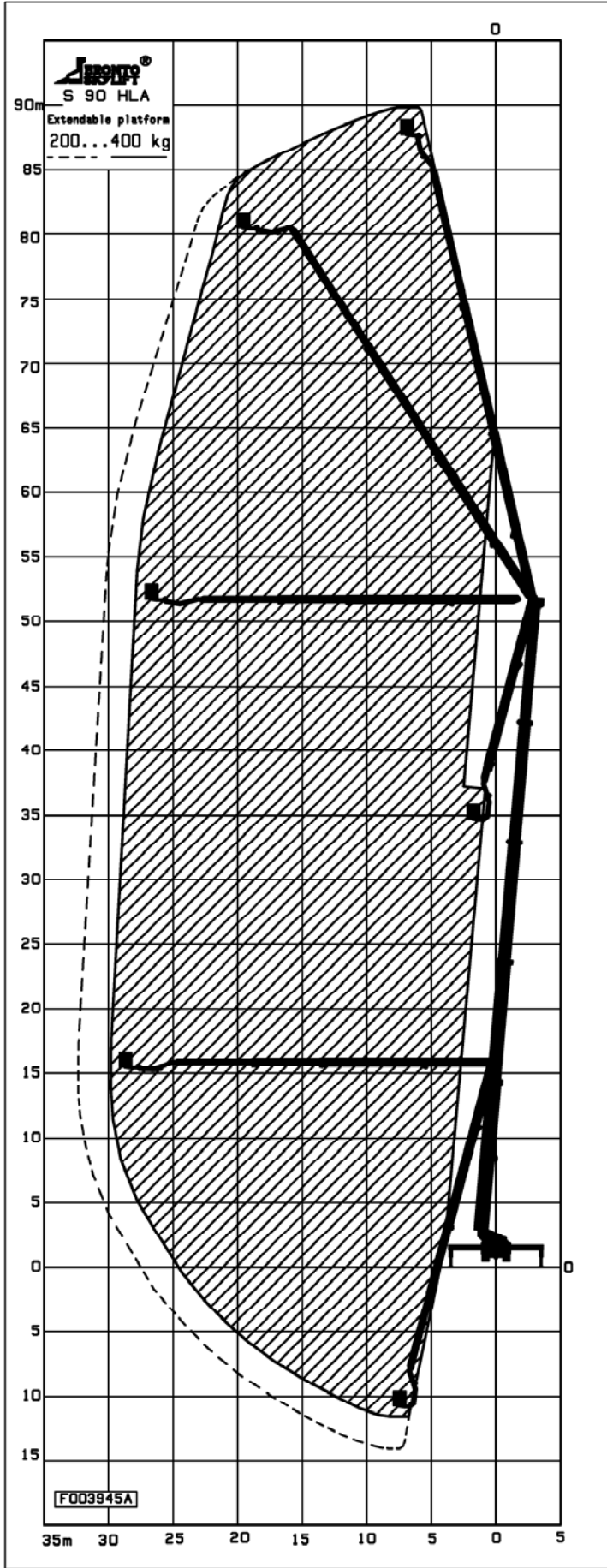


NOTE1: Levitetttävä työkori  
 NOTE2:  
 REMARKS: PRELIMINARY



**TECHNICAL DATA**

Safe working load max. : 400 kg  
 Max. permitted wind speed : 12.5 m/s  
 Typical GVW : 48.0 ton  
 min. operating weight : 46.5 ton  
 Outrigger width and lenght c/c : 7.0/6.85 m  
 - normal jacking : 6.0/6.85 m  
 - one side jacking (opt.) :  
 Calculation code :

All rights reserved  
 Muutoksen varaukset  
 Sans reserves de modification  
 Muutosta ja lisäosa tilausten mukaisesti  
 Description für Bauführer

1:250 BRONTO SKYLIFT S 90 HLA  
 (A3)  
 0

OUTREACH DIAGRAM  
 SAFE WORKING LOAD 400 kg  
 LAYER  
 DRAW NUMBER  
 F003945A

BRONTO SKYLIFT  
 BRONTO SKYLIFT OY AB FINLAND  
 BRONTOCAD  
 REV

2008-09-15